



www.gebauer-sl.com

Gebauer SL – The Smart Solution
for all your Refractive Procedures

Reliable, Flexible and Simple.



Single-use



Gebauer SL



Flexible

Epi-LASIK

SBK

ASA

LASIK

Variable Hinge Position

Sterile

Simple

Single-use

Click-and-Go

Proven Quality

Repeatable

Reliable

Precise



The Click-and-Go Show



Set-up » **Step 1** «



Set-up » **Step 2** «



Set-up » **Step 3** «



One-Step Removal

Simple

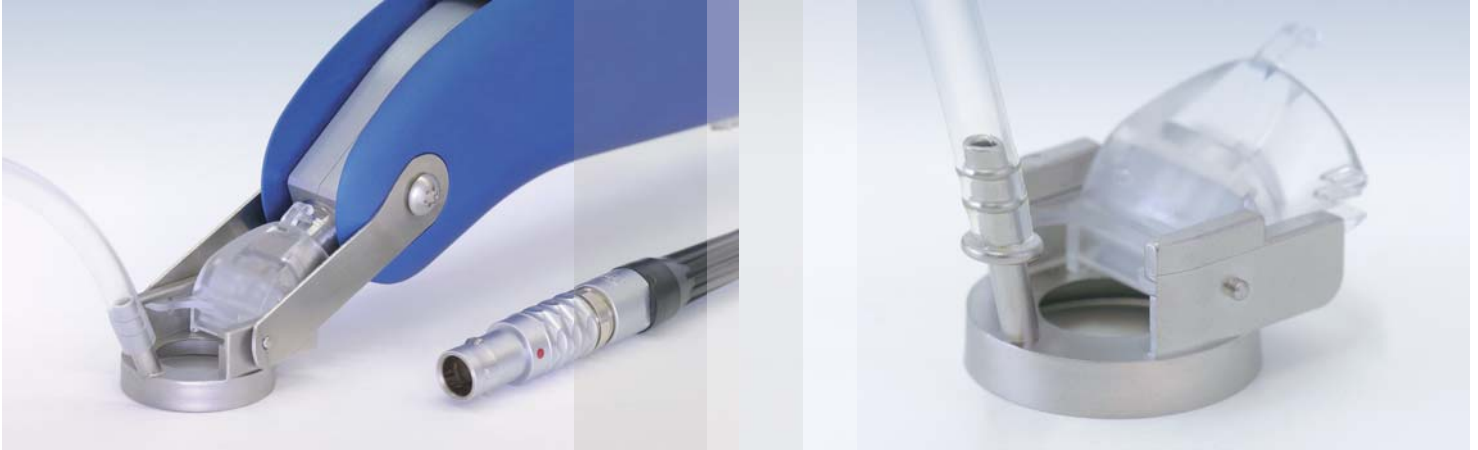
In the operating room ophthalmic surgeons should not be burdened with tasks that are not the operation itself.

For this reason we have simplified the handling, use and setup of the Gebauer SL Keratome.

By use of the "**Click-and-Go**" mechanism and intelligent packaging, the Gebauer SL handpiece and Single-Use Set are assembled together and ready to use in seconds. Furthermore, autoclaving is eliminated by using the Single-Use Set.

The Gebauer SL is completely **preassembled** saving time and adding to patient comfort. The two part handpiece design provides the surgeon with a motionless hand through the entire procedure. The inner motorized handpiece drives the head while the outer handpiece provides a motionless grip for the surgeon.

Less handpiece motion ensures repeatable results, greater patient comfort and a simpler procedure for the surgeon. Handpiece operation is further simplified by an **ergonomic** foot pedal control and fixed motor parameters. The Gebauer SL was designed for the O.R. where simplicity delivers success.



Reliable

The sterile Single-Use Set for Gebauer SL is composed of three parts: a new single use, high technology, medical grade plastic Epi Head preloaded with a Micron Edge Separator or Gebauer LASIK Blade and a nickel free stainless steel corneal vacuum ring.

Thanks to new **high tech** manufacturing processes we can produce these parts to the tight tolerances necessary for **safe** repeatable procedures. Thus, we can consistently deliver the Gebauer-Keratome-**Quality** to the Gebauer SL and reliably provide excellent quality flaps every time.

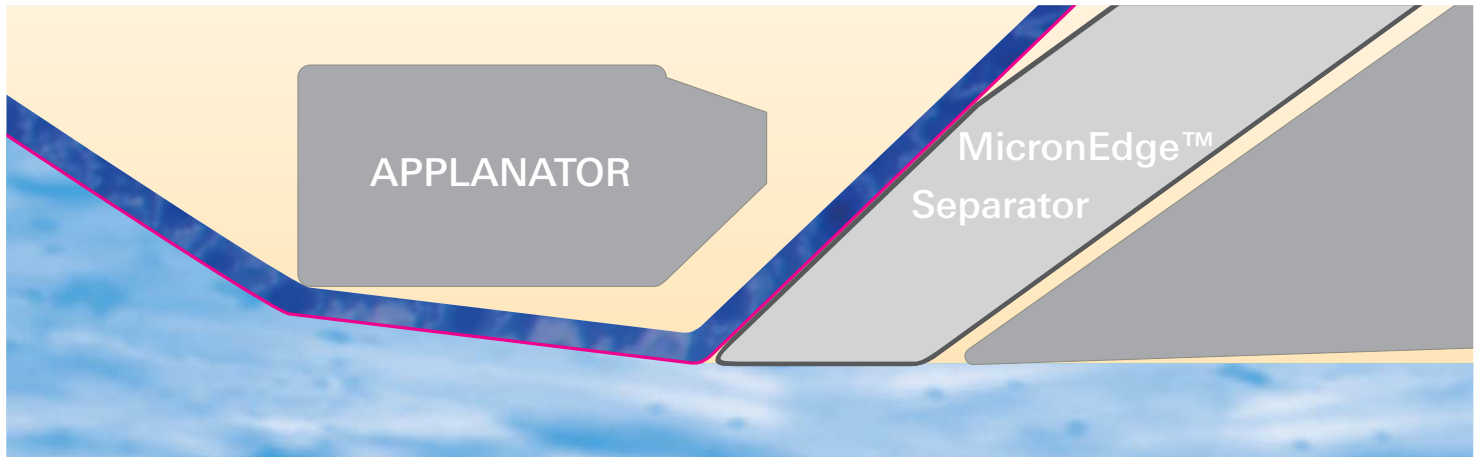
The Gebauer SL corneal vacuum ring provides superior holding force thus the system stays perfectly fixed during the operation making each procedure safer than ever before.

For every single operation a brand new, gamma sterilized separator/blade, head and vacuum ring are put into action. Therefore, problems with wear or damage caused by cleaning or sterilization are completely eliminated. The Single-Use Set provides the safety and reliability of a brand new system for each and every procedure.

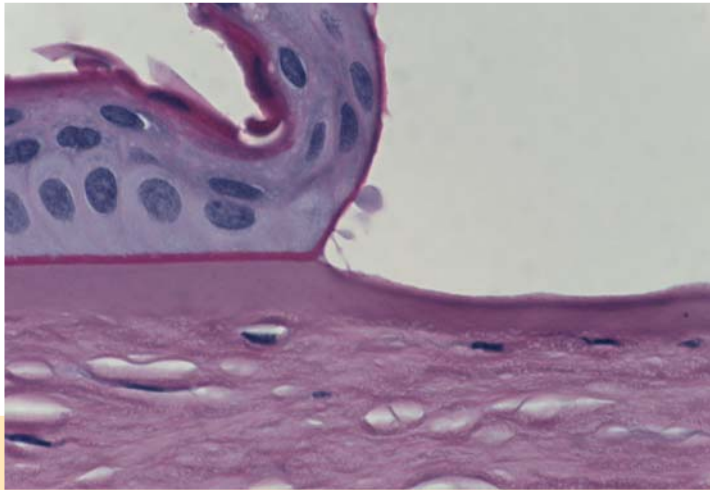
Flexible

With the Gebauer SL, all current refractive operations can be carried out: **Epi-LASIK**, Advanced Surface Ablation (ASA/PRK), **LASIK**, Thin-Flap-LASIK or SBK.

For each procedure there is a preconfigured Single-Use Set available. Therefore, the Gebauer SL is **individually** adaptable to every procedural need, simply **Click** the corresponding Single-Use Set to the Gebauer SL and **Go**.



Separation Method with Gebauer Epi-Separators



Histology of Epi-Flap created with Gebauer Epi-Separator

The following possibilities are available:

Operation Technique: Epi-Separation (with or without hinge)
LASIK 130 μ m or LASIK 100 μ m

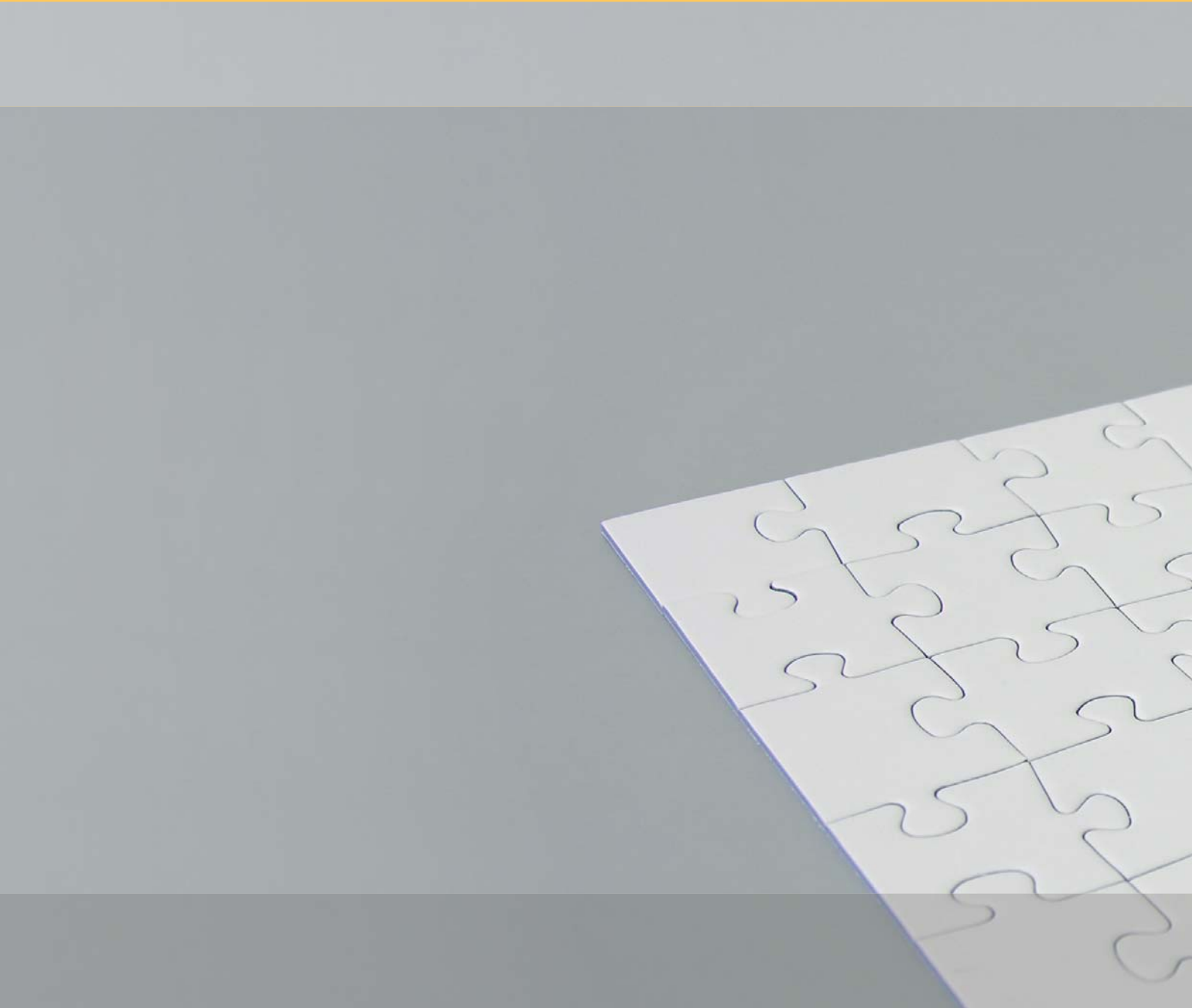
Flap Diameter: 8.5 mm or 9.5 mm

Ring Size: 19 mm or 20 mm

In addition, the Gebauer SL offers various hinge positions: Superior, nasal or any other angle in between. No other keratome delivers this much flexibility.

Contact us for detailed specifications. All technical specifications subject to change.





Gebauer Medizintechnik GmbH

Monbachstraße 7/1
D-75242 Neuhausen
Germany

Telefon +49(0)7234/94 21-0
Telefax +49(0)7234/94 21-20

info@gebauer-sl.com
www.gebauer-sl.com

Gebauer 